



# EMBRACE THE TRULY CHERISHED

Karjat's One of A Kind  
Resort Themed Gated Community

*Life*



Artist's Impression

## Our Products & Services

- Bespoke Villas and Farm Houses



- Farm Community Layouts  
**1/2 Acre & 1 Acre Units**

- Gated Community Projects  
**2, 3 & 4 Bed Villas**



We've launched 4 projects in 5 years, showcasing our commitment to Nature-Centric Lifestyles for families seeking personalized weekend homes. Our goal is to enhance our customers' quality of life by promoting nature-oriented homes in gated farmhouse communities. We handle everything from design and approval to procurement, construction, and maintenance with our in-house team of experts.

**We Design**

living spaces that harmonize with the natural environment

**We Build**

structurally sound & aesthetically pleasing homes

**We Develop**

sustainable community living projects

**We Manage**

communities so that your every stay is memorable

ATAL SETU  
Mumbai Trans Harbour Link



NAVI MUMBAI  
International Airport



PANVEL-NERAL  
Bhimashankar Highway



NATIONAL HIGHWAY  
548A



KARJAT



**Connectivity**  
**Explore TRULIFE**  
**The landmark of Karjat**

Envision your holidays in the lap of luxury at TruLife,  
sparking a transformative shift in your life priorities.



# ACTIVE COMMUNITY LIVING AT THE FOOTHILLS OF KARJAT



3 Star Resort in 2-acre with  
4 Star amenities.



110 Villas - 2, 3, and 4  
Bedroom villas



Private Villa



20 + Amenities



NMIA

Own a private villa or resort unit in a 10-acre gated community with 110 luxurious 2, 3, and 4-bedroom villas, plus a 2-acre resort. Enjoy access to Trulife Club's 20+ amenities and a resort with 4-star amenities. Conveniently located just 2 hours from Mumbai.



# WELCOME TO TRULIFE CLUB RESORT:

A Perfect Getaway

Discover TruLife Club Resort, a 3-star boutique resort with 4-star amenities sprawling across 2 acres. Nestled in a nature-centric environment, it offers 42 fully furnished suites, each designed for ultimate comfort and luxury.

The Nature Home You Always Wanted

## CRAFTED WITH PRECISION

Discover meticulously designed spaces  
tailored to your dreams, where every  
detail is a testament to luxury and perfection



Artist's Impression



Stay productive effortlessly from your  
nature home at TRULIFE with our

## **DEDICATED BUSINESS CENTER**



# THE ULTIMATE HUB

*The Trulife club*

Artist's Impression



Artist's Impression

SPA



Artist's Impression

GYM

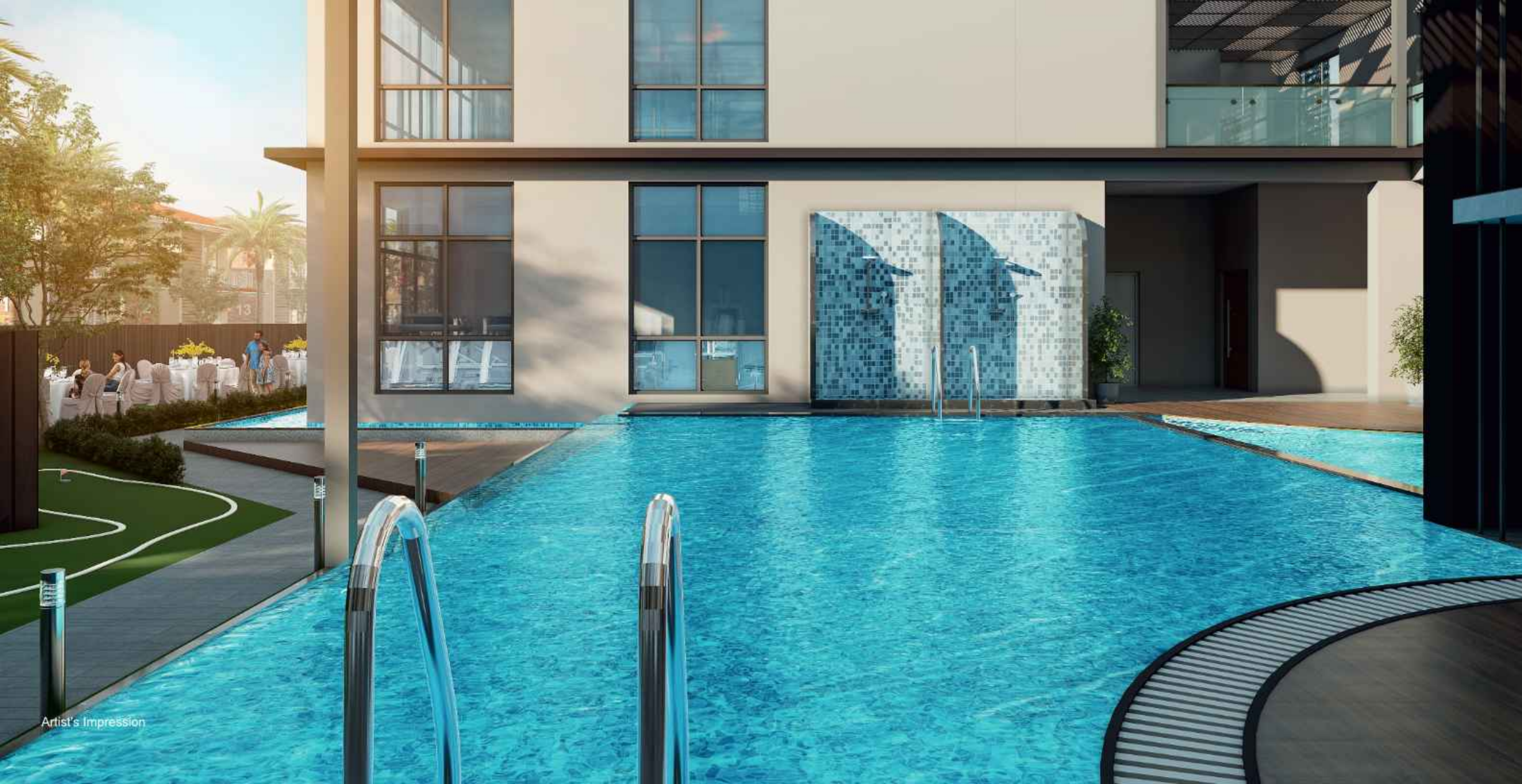
Enjoy ultimate relaxation at the Club with amazing amenities. Indulge in our modern gym, steam room, and sauna. Rejuvenate with a variety of treatments and massages at the spa.





# DYNAMIC LIVING AT TRULIFE CLUB'S SPORTS ENCLAVE

Our multipurpose sports court is perfect for various activities  
Cricket enthusiasts will love our fully equipped pitch with a bowling machine



# UNWIND TRULY, LIVE FULLY

Take a refreshing dip n our invigorating swimming pool, where cool waters await to refresh your senses and rejuvenate your spirit

Artist's Impression



Artist's Impression

- Convenience Store
- Clubhouse
- Resort
- Children's Play Zone
- Indoor Games
- Yoga & Meditation Garden
- Gymnasium
- Steam, Sauna & Spa
- Swimming Pool & Kids Pool

- Gazebos & Socializing Areas
- Multipurpose Sports Court
- Putting Green Hole
- Cricket Pitch with Bowling Machine
- Adventure Sports: Rock Climbing
- Jogging Track

- Book Cafe
- Viewing Deck
- Multipurpose Hall
- Banquet Hall with Lawn
- 24 x 7 Security with CCTV Surveillance
- Landscaped gardens with Water Features
- Multi-Cuisine Restaurant





Artist's Impression

# TRULIFE'S BOOK CAFÉ AND DINING HAVEN

Enjoy family time and delicious meals at our multicuisine restaurant or relax at the café. The club offers a versatile multipurpose hall, a scenic jogging track, and a banquet hall with a lush lawn

# HOLISTIC

BUILDING NATURE COMMUNITIES

## We'd Love to Connect

+91 8390824000 info@holisticgroup.in

### Site Address:

Karjat – Kashele – Khandas Rd, Pathraj,  
Village, Tadwadi, Maharashtra 410201

### Office Address:

Real Tech Park, Office- 12,13,14, 5th Floor, Sec.- 30A,  
Vashi, Navi Mumbai, M

[www.holisticgroup.in](http://www.holisticgroup.in)



#### NOTE / DISCLAIMER

The information herein i.e., specifications, designs, dimensions etc. are subject to change without notification as may be required by the relevant authorities or the developer's, architect and cannot form part of an offer or contract, whilst every care is taken in providing this information. The owner, developer and manager cannot be held liable for variation. All illustrations & pictures are artist's impressions only. The items specified are subject to variations, modifications & substitution as may be recommended by the company's, architects / or relevant approving authorities.

Financed by:



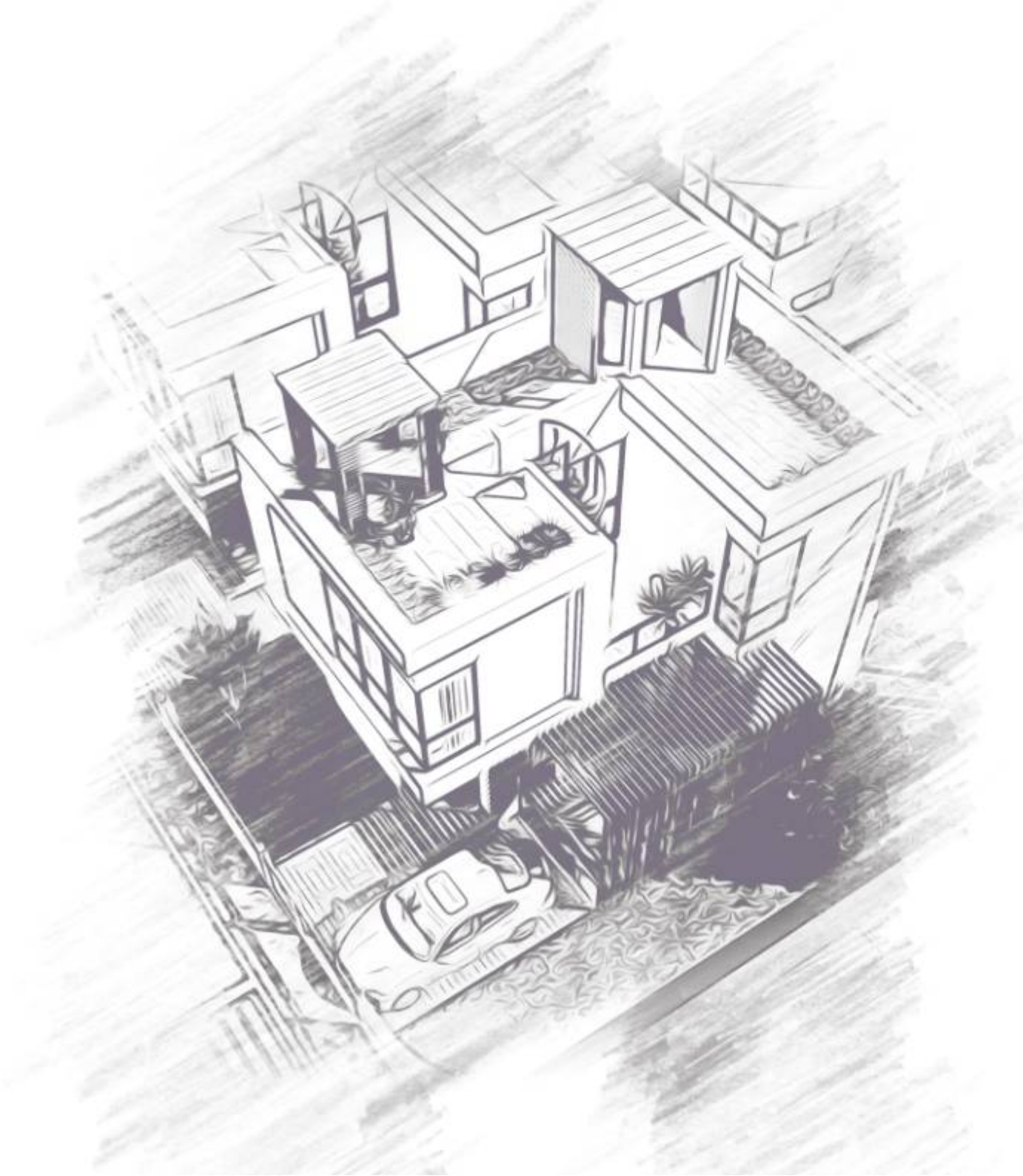
Building homes. Nurturing relationships.



MahaRERA Regn. No.:  
**P52000047832**  
www.maharera.gov.in

Scan for Project Walkthrough

CONSTRUCTION



**TRULIFE**

KARJAT

**ACTIVE COMMUNITY LIVING**

## Crafting Excellence Your Dream Home, Now with Top-Tier Materials

Blockwork  
600 x 200 x 150  
AAC Blocks



Blockwork  
Jointing Mortar



Ultratech  
readiplast rp 40kg  
for plastering work



Internal - Gypsum  
Plaster



Window



Jindal Aluminium

Plumbing  
Concealed Material



PRINCE PIPES AND FITTINGS LIMITED

Plumbing  
Sanitary Ware



Electrical  
Concealed Material



Pipes | Desh ki Lifeline

Electrical  
Fittings



Waterproofing  
& Insulation



Paint  
Solutions



asianpaints

Tiles



TILES • BATHWARE

Steel



TATA STEEL



- Gated community spanning over 10 acres
- 110 villas available in 2, 3, or 4 Bed & above options
- Villas with customizations - plunge pools, sun decks, terrace gardens, and much more
- Upcoming 2-acre Trulife Club & Resort with 4-star amenities & 42 fully furnished suites

## 2 BED FLOOR PLAN



GROUND FLOOR



FIRST FLOOR

Luxury Upgrades like plunge pool, gazebo, jacuzzi, terrace garden, solarium (glassroom), and much more available at an add on cost & not included in the base price.

# 2 BED VILLA

**1396 Sq. ft**  
Required plot size  
1615 sq .ft & above





## 3 BED FLOOR PLAN



GROUND FLOOR



FIRST FLOOR

Luxury Upgrades like plunge pool, gazebo, jacuzzi, terrace garden, solarium (glassroom), and much more available at an add on cost & not included in the base price.

# 3 BED TYPE A VILLA

**1600 Sq. ft**  
Required plot size  
1615 sq .ft & above



### 3 BED FLOOR PLAN



### GROUND FLOOR

Luxury Upgrades like plunge pool, gazebo, jacuzzi, terrace garden, solarium (glassroom), and much more available at an add on cost & not included in the base price.



### FIRST FLOOR

# 3 BED TYPE B VILLA

**2494 Sq. ft**  
Required plot size  
2691 sq .ft & above

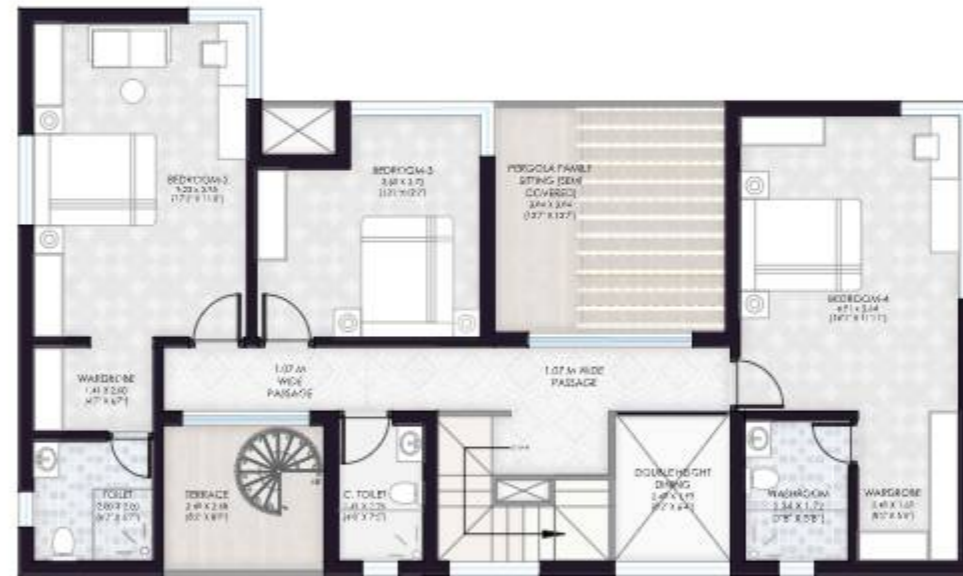




## 4 BED FLOOR PLAN



GROUND FLOOR



FIRST FLOOR

Luxury Upgrades like plunge pool, gazebo, jacuzzi, terrace garden, solarium (glassroom), and much more available at an add on cost & not included in the base price.

# 4 BED TYPE D VILLA

**3235 Sq. ft**  
Required plot size  
2691 sq .ft & above





We've launched 4 projects in 5 years, showcasing our commitment to Nature-Centric Lifestyles for families seeking personalized weekend homes. Our goal is to enhance our customers' quality of life by promoting nature-oriented homes in gated farmhouse communities. We handle everything from design and approval to procurement, construction, and maintenance with our in-house team of experts.

### Our Business Verticals



# OUR CORE VALUES

- **INTEGRITY**  
We uphold the highest ethical standards in all our interactions, ensuring honesty, transparency, and accountability in every aspect of our work
- **QUALITY**  
We are committed to delivering exceptional quality in every project. Our dedication to craftsmanship and precision is evident in the results we achieve.
- **SUSTAINABILITY**  
We prioritize sustainable practices, aiming to create eco-friendly and energy efficient structures that have a positive impact on the environment.
- **SAFETY**  
The safety of our team and clients is a non-negotiable priority. We Implement rigorous safety measures to create secure work environments.
- **CLIENT SATISFACTION**  
We uphold the highest ethical standards in all our interactions, ensuring honesty, transparency, and accountability in every aspect of our work.

# Location Map



## We'd Love to Connect

+91 8390824000   info@holisticgroup.in

### Site Address:

Karjat – Kashele – Khandas Rd, Pathraj, Village, Tadwadi, Maharashtra 410201

### Office Address:

Real Tech Park, Office- 12,13,14, 5th Floor, Sec.- 30A, Vashi, Navi Mumbai, M

www.holisticgroup.in



#### NOTE / DISCLAIMER

The information herein i.e., specifications, designs, dimensions etc. are subject to change without notification as may be required by the relevant authorities or the developer's, architect and cannot form part of an offer or contract, whilst every care is taken in providing this information. The owner, developer and manager cannot be held liable for variation. All illustrations & pictures are artist's impressions only. The items specified are subject to variations, modifications & substitution as may be recommended by the company's, architects / or relevant approving authorities.

Financed by:



**HOLISTIC**  
BUILDING NATURE COMMUNITIES